

YALE RESOURCES LTD

**The Partner of Choice
for Exploration in Mexico**

Urique Project

March 2011

Disclaimer

This presentation contains forward looking statements that are subject to a number of known and unknown risks, uncertainties and other factors that may cause actual results to differ materially from those anticipated. Factors that could cause such differences include: uncertainties inherent in geological interpretations, changes in world equity markets, the cost and supply of materials and regulations affecting the mining industry. Although we believe the expectations reflected in our forward looking statements are reasonable, results may vary, and we cannot guarantee future results, levels of activity, or the achievement of stated goals.

Ian Foreman, P.Geo., is Yale Resources' Qualified Person as per National Instrument I 43-101 and has reviewed the technical information in this presentation.

Urique Project

Chihuahua State, Mexico

- ✦ Gold & Silver
- ✦ Located 240 km south of Chihuahua, Chihuahua State
- ✦ Accessible from Chihuahua
- ✦ Road access
- ✦ Accessible water and power

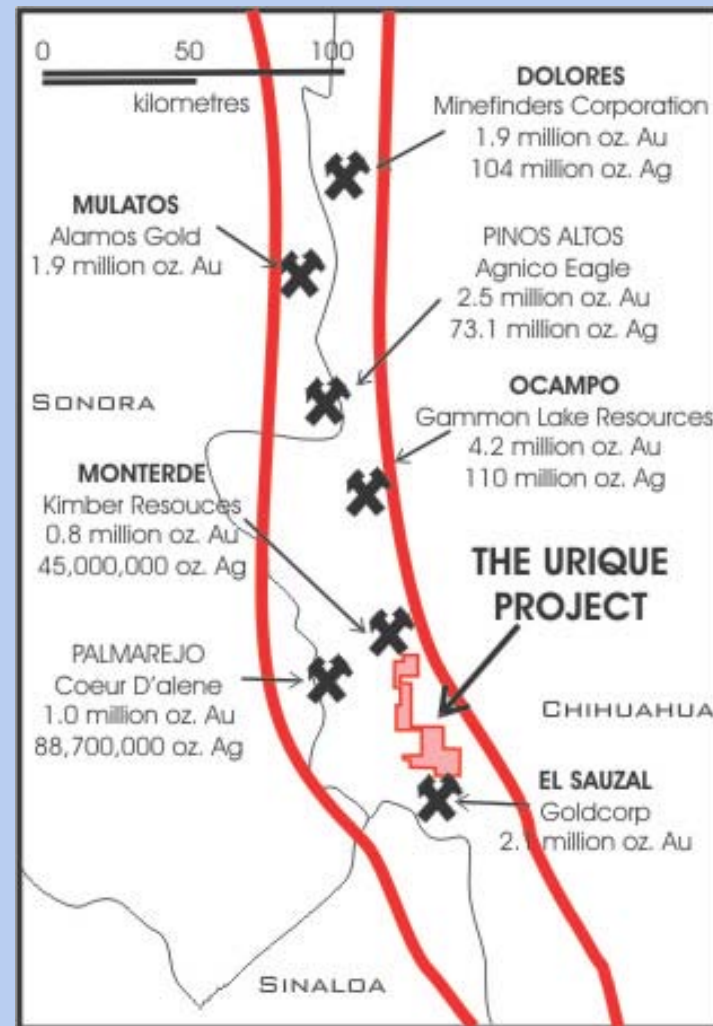


Deposit Model:

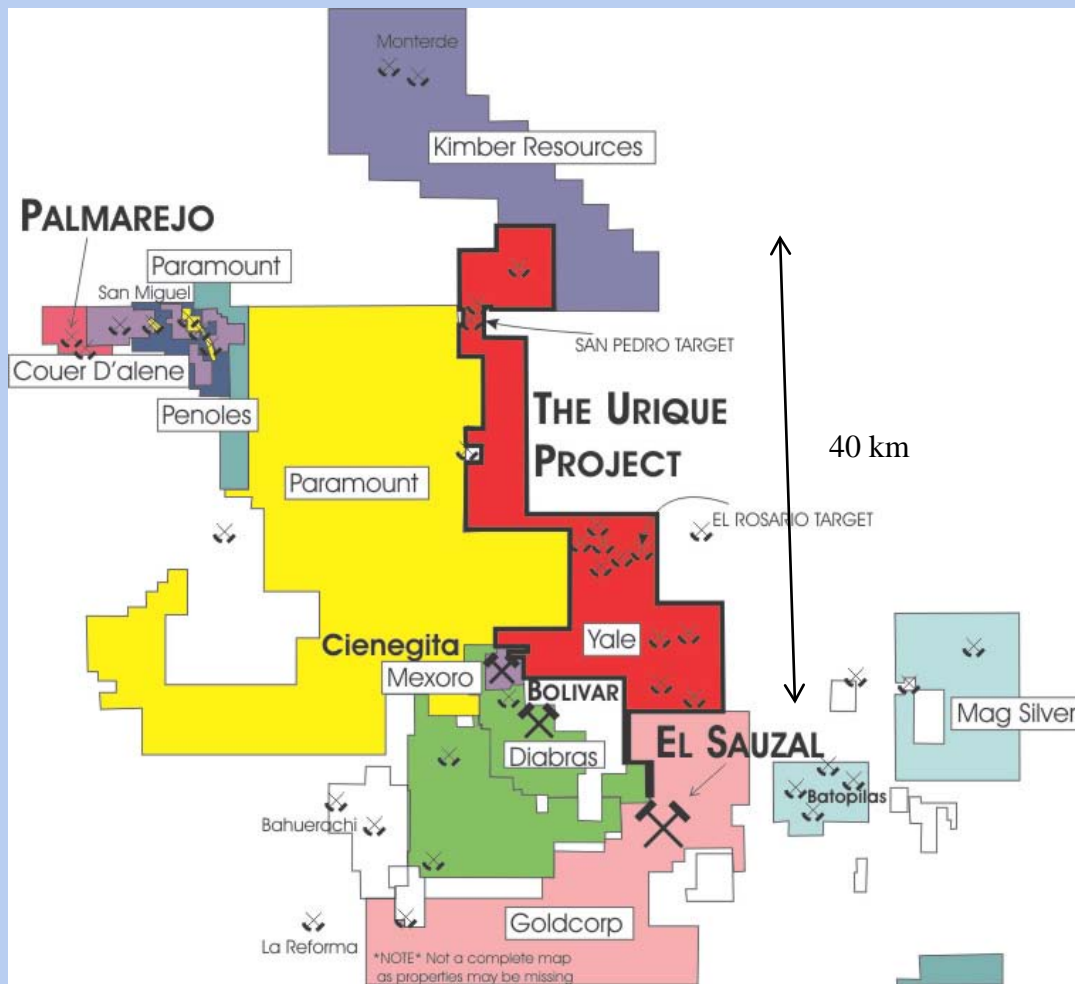
Gold and silver hosted in mesothermal to epithermal veins with spatially related high sulphidation system bulk tonnage potential.

Urique Project – Summary

- Located in the prolific Sierra Madre Gold Belt.
- Project area borders the Goldcorp's El Sauzal Mine to the south and Kimber's Monterde Ag/Au project to the north.
- The Urique Project has been divided into two parts, each with different geology, thus differing exploration strategies.



Urique Project – Surrounding Properties



One of the largest under-explored packages of land in the core of the Sierra Madre Precious Metal Belt...

- ◆ Eleven concessions covering 28,970 hectares (289.7 km² or 71,367 acres).
- ◆ 9 known targets within the property

Urique Project – Historic Exploration & Past Production

- ◆ Spanish worked in the area approx. 350 years ago with a foundry built in the town of Urique.
- ◆ Greater than 20 historic mines have been identified just within the Urique area alone.
- ◆ Yale optioned the property in 2007 and purchased the property outright in 2009.
- ◆ Over 60 prospects and historical mines have been identified in the property.
- ◆ Optioned out in 2009/10 and returned to Yale for not fulfilling terms of agreement – resulting in the property not having been advanced.
- ◆ Key parcel of land covering San Pedro was staked in 2010



Key Exploration Targets

San Pedro

Urique – El Rosario

Secondary Exploration Targets

Cuitico

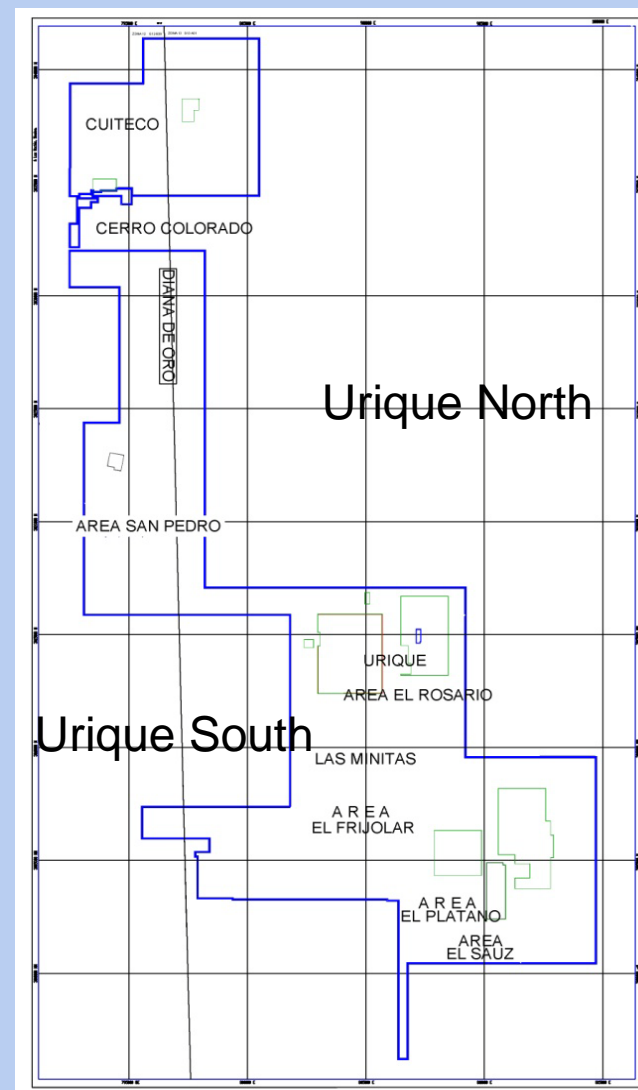
Urique - exploration

Las Minitas

El Frijolar

El Platano

El Sauz

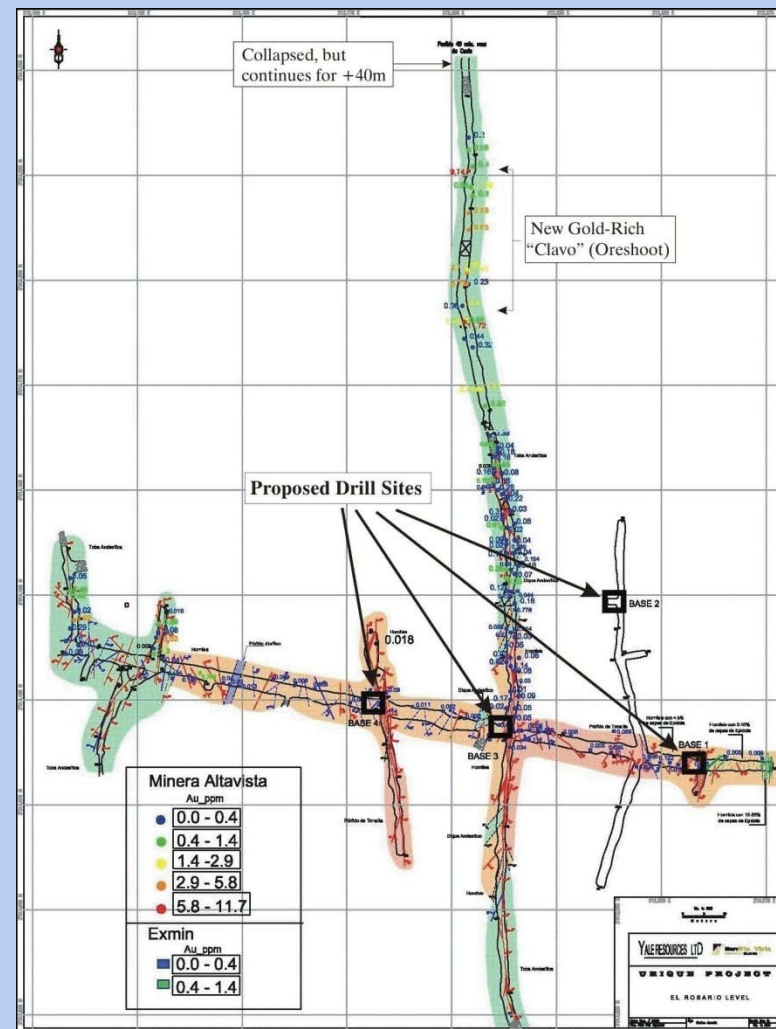


Urique Project – El Rosario Target

Highlights:

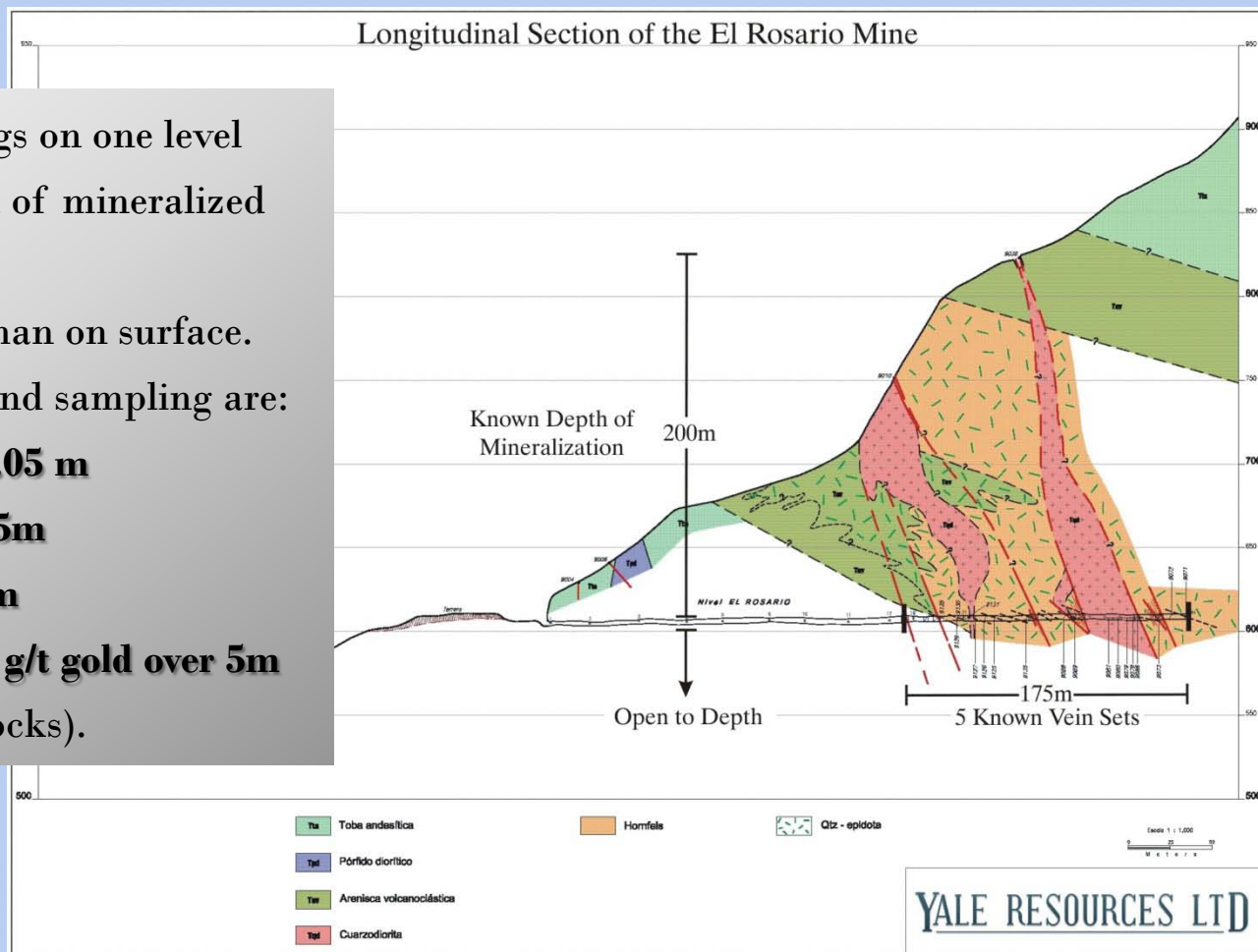
Sample	width (m)	Au (g/t)	Ag (g/t)	Ag (oz/t)
7473	0.10	1.23	1,110.0	32.3
7485	0.10	1.73	8,290.0	241.5
7487	0.10	2.78	3,640.0	106.0
7490	0.12	8.88	1,030.0	30.0
7483	0.10	2.14	3,220.0	93.8
6842	0.17	2.87	1,155.0	33.6
6853	0.10	10.60	453.0	13.2

Vein/level/sample	Width (m)	Au (g/t)	Ag (g/t)	Cu (%)	Pb (%)	Zn (%)
Vein 1						
<i>Rosario level</i>						
9050	0.65	0.28	61.8	0.4	0.1	0.2
9053	NA	0.36	269.0	0.8	0.2	0.1
Vein 3						
<i>Surface workings</i>						
9010-14	4.37	0.25	174.7	0.1	1.9	0.4
including 9012-13	1.27	0.32	290.0	0.1	0.3	0.1
including 9013	0.27	1.30	1320.0	0.6	1.1	0.2
9014	0.60	1.46	457.0	0.7	0.9	0.4
<i>Rosario level</i>						
9129	0.95	0.79	54.8	-	0.2	0.1
9135	1.60	0.13	55.6	0.2	0.2	0.3
Vein 4						
<i>Rosario level</i>						
9116	2.20	0.09	88.1	0.1	0.1	0.2
9121	0.36	0.36	98.0	0.1	0.5	1.2
Vein 5						
<i>Surface workings</i>						
9031	0.80	0.83	581.0	0.2	5.3	0.5
9039-43	2.75	0.78	149.7	-	0.6	0.1
including 9041-43	1.55	1.22	251.3	-	0.9	0.1
including 9042	0.25	5.77	1450.0	0.2	4.2	0.2
<i>Rosario Level</i>						
9103	1.55	0.27	37.1	-	0.1	0.0
9106 wall rock	5.00	0.78	257.0	0.1	0.8	0.1
9108	1.15	0.13	38.7	-	0.1	0.2
9113	1.20	0.71	109.0	-	0.1	0.1



Urique Project – El Rosario Target

- Over 600 metres of workings on one level
- Five vein sets within 175 m of mineralized host rocks
- Veins appear much wider than on surface.
- Highlights from underground sampling are:
 - **1,640 g/t silver over 1.05 m**
 - **441 g/t silver over 2.35m**
 - **8.8 g/t gold over 0.85m**
 - **257 g/t silver and 0.78 g/t gold over 5m**
(within the host rocks).



Urique North: San Pedro Target

- discovered during the construction of some new roads.
- mineralization recognized to date consists of widely spaced quartz veins hosted in strongly altered andesites at or near the contact with overlying rhyolites, which is considered a favourable stratigraphic location.



Small workings at San Pedro

2007 results:

Sample Description	Width (m)	Au (g/t)	Ag (g/t)
From small workings:			
Dump	grab	27.20	482.0
Vein	1.1	6.60	61.3
Vein	1.1	35.30	401.0
Vein	0.22	8.40	193.0
From new discovery:			
Vein	0.4	3.30	547.5
Vein	0.3	10.10	202.0



High grade vein

Urique North: San Pedro Target

2008 – 2010 results

Area/ Sample	Width (m)	Au (g/t)	Ag (g/t)
<i>Vein NE 1</i>			
3715	0.35	4.38	38.6
3671, 3672	1.3	3.65	14.0
3670	Dump	12.50	42.5
<i>Vein NE 3</i>			
3734	0.35	2.87	36.8
3733	0.20	20.70	133.0
<i>Intersection NE and NS Veins</i>			
3710-3716	21.65	0.33	7.6
<i>Vein NW 6</i>			
3708	0.30	7.07	19.8
3726	0.25	137.50	133.0
3821	0.25	2.41	28.8
3822	3.0	1.01	17.0
2185	0.70	30.80	451.0
3825	1.7	2.40	0.2
12481	3 x 2	28.30	315.0
<i>Split, Vein NW 4</i>			
3817	0.30	12.45	129.0
3820	0.20	21.40	42.6

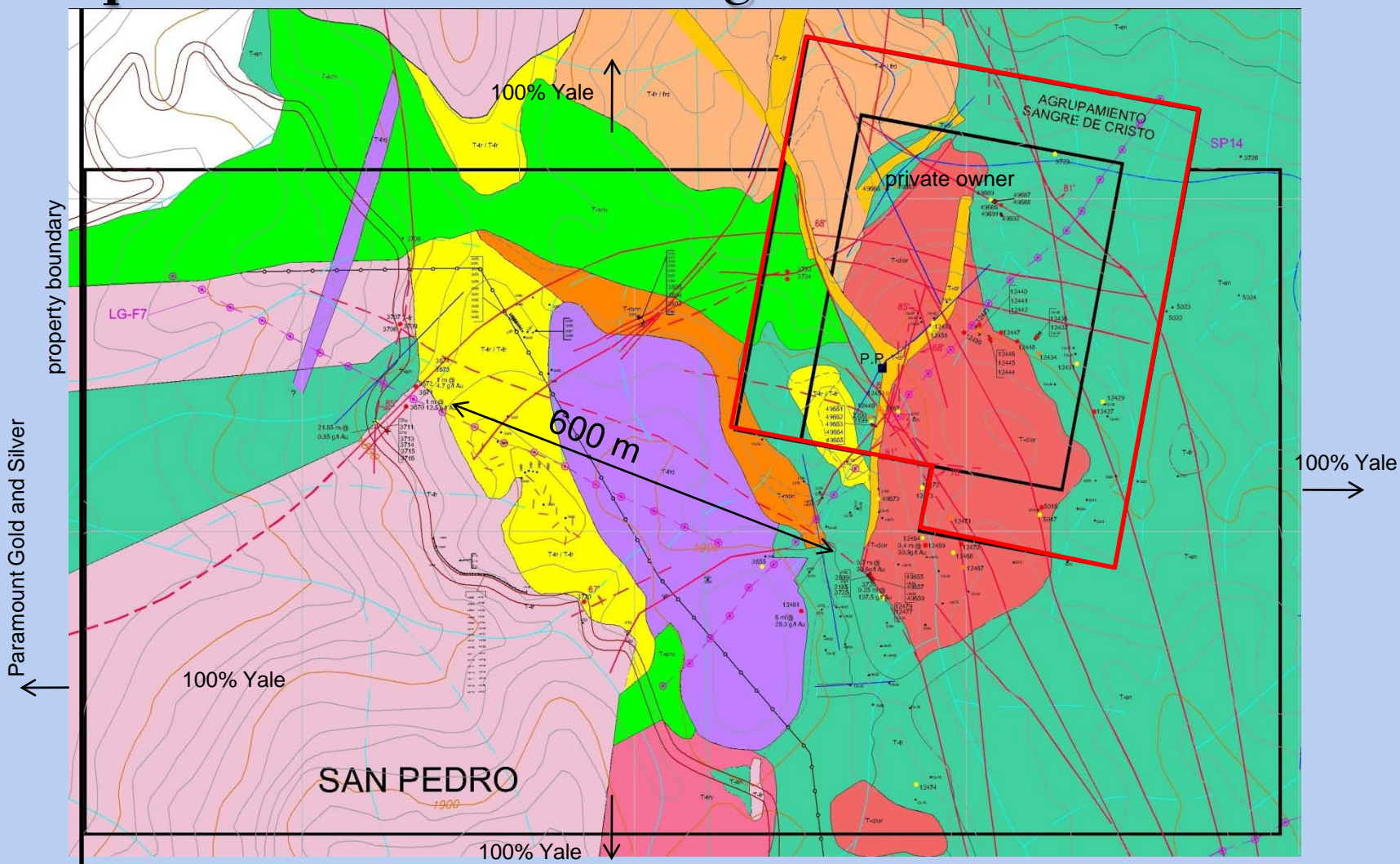


Wide zones of strong alteration



High grade gold in veins

Urique North: San Pedro Target



Other Targets:

El Platano: Reported to contain a 1.2 km long vein that averages 4 meters in width; 3 samples taken by the CRM, averaged 4.0 metres in width with 1% Cu and 84 g/t Ag.

Los Alisos: A large visible iron oxide anomaly, possibly consisting of advanced argillic alteration, surrounding an intrusion at Cobriza with anomalous copper and gold values; the CRM has compared this area to El Sauzal prior to its discovery.

El Frijolar: A alteration zone approximately one square kilometre in size that is rich in iron oxides. A 0.5 m vein is reported to outcrop for 50 meters - 2 samples by the CRM gave 4.2 g/t gold and 46.9 g/t gold.

Cuiteco: a large area that covers at least several square kilometres of strong silica-clay alteration – reported vuggy silica. Weak precious metals and pathfinder element anomalies.

El Sauz: located at the southern most extreme of the property – immediately north of the El Sauzal property - small working returned **1.5 metres of 0.57 g/t gold and 532 g/t silver** and dump in front of the working returned 1.49 g/t gold and 130 g/t silver.

Urique Project – Proposed Exploration Program

Regional/Property scale:

- ASTER imaging
- Prospecting and sampling

Urique South

- Urique Area:
 - Detailed mapping and sampling of 4 km² area
 - Test the extent of the gold and silver mineralization at the El Rosario mine area:
 - Complete underground mapping and sampling
 - 1,500 m of underground drilling

Urique North

- Cuiteco:
 - Expert opinion
 - Geophysics

- San Pedro:
 - Detailed mapping and sampling
 - Drilling

Contact Information

Head Office:

Yale Resources Ltd.
400 – 409 Granville St.
Vancouver, BC, V6C 1T2

Phone: +1 604-678-2531

Fax : +1 604-678-2532

Mexico Office:

Minera Alta Vista, S.A. de C.V.
Bvd. Las Quintas No. 64, Col. Santa Fe
Hermosillo, Sonora, Mexico 83249

Phone: +011 52-662-210-4737

**For more information contact:
info@yaleresources.com**